

MODULE 9 L04

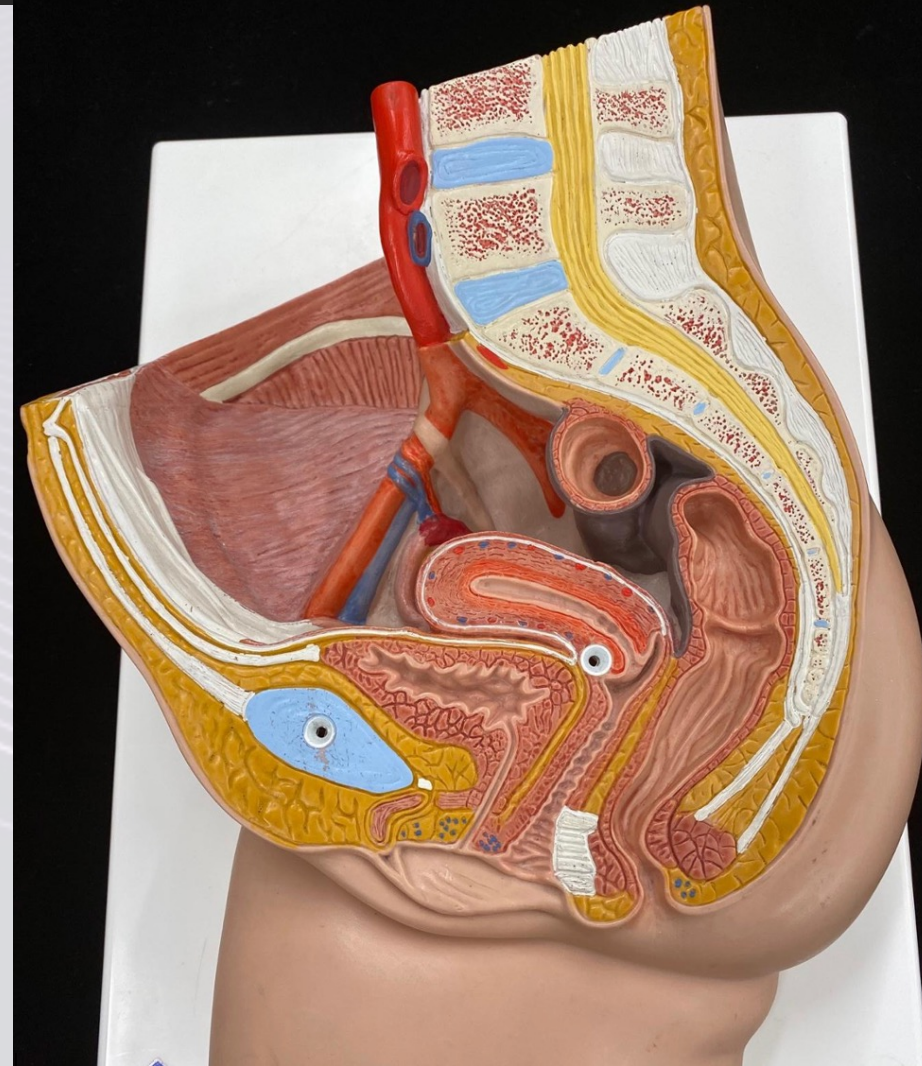
Digestive System: Large Intestinal Functions

Dr. Lisa Brinn
lbrinn@fiu.edu



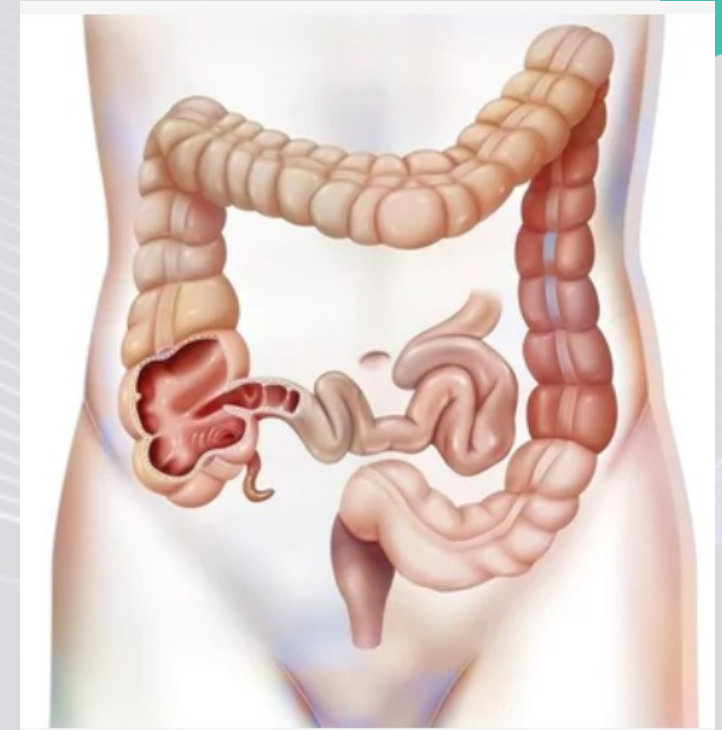
Large Intestine Digestive Functions

- Finish absorption of nutrients
- Absorption of water and electrolytes
- Form feces
- Eliminate feces from the body
 - ❖ Through anus



Mechanical Digestion

- Trigger:
 - Chyme in the stomach → peristalsis in ileum → chyme enters cecum
- Chyme in cecum
 - Initiates peristalsis in colon
- Types of movements:
 - A. Peristalsis
 - B. Haustral contraction
 - C. Mass movement
 - Gastrocolic reflex
- Defecation
 - Valsalva's maneuver



Chemical Digestion

- Glands secrete mucus
 - ❖ Not enzymes
- Chemical digestion
 - ❖ Bacteria
 - Process known as saccharolytic fermentation
 - Bacteria break down carbohydrates



- Products: hydrogen, CO₂, methane gases



flatus → flatulence (excessive flatus)